

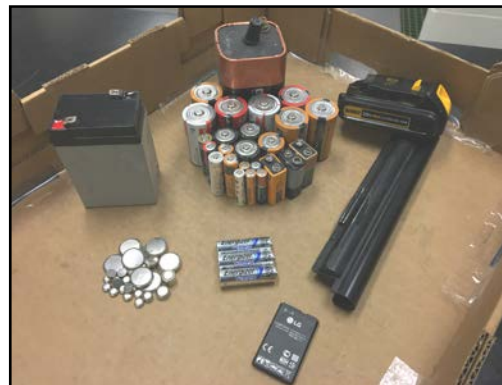


## Syracuse University Environmental Health and Safety Services Waste Batteries Generator Guidance Document

Batteries come in many different types and may contain hazardous components (e.g. lead, mercury, cadmium, sulfuric acid) that cannot be disposed of in the regular trash. Environmental Health and Safety Services (EHSS) coordinates the University's waste battery recycling program and facilitates the collection and recycling of all waste batteries generated by the University. Battery recycling containers are provided by EHSS and are located in many Campus department offices, as well as at the main desks of most residence halls. Waste batteries can also be dropped off at EHSS locations in rooms 029 Lyman Hall, or 0-130 CST.

### Types of batteries collected include, but are not limited to...

- ❖ Alkaline
- ❖ Button
- ❖ Lead/Acid
- ❖ Rechargeable
- ❖ Lithium
- ❖ Nickel-Cadmium (NiCd)



### Battery Management Guidance

- Battery containers are centrally located throughout Campus in department offices, and at the main desk of most residence halls. Additionally, waste batteries can be dropped off at EHSS locations in rooms 029 Lyman Hall, or 0-130 CST.
- University personnel can make a request to EHSS if a new centrally located battery container, or replacement battery container is needed. EHSS collects waste batteries from recycling containers on regular basis, and at a minimum of once a year.
- Battery recycling containers should be kept closed at all times.
- University owned equipment or machinery being disposed or recycled must have all batteries removed.
- EHSS should be contacted for a waste battery pickup if:
  - The recycling container is full.
  - A waste battery is damaged, leaking or bulging.
  - There are multiple oversized batteries.
  - The start date of the battery recycling container is approaching a year old.



**To request a waste batteries pickup or assistance with the management of your waste batteries, please contact EHSS at 315-443-4132 or submit an EHSS Request for Service at: <http://ehss.syr.edu/about/request-for-service>**