

Artwork shown at approximately 110%. PDF prints
at approximately 100% from acrobat reader or
when "Fit to printable area" settings are selected.

ACCEPTED
VIA NOTIFICATION
LABEL NOT REVIEWED

April 8, 2014

New York State Department
of Environmental Conservation
Division of Materials Management
Pesticide Product Registration

Doc id: 538298



HYDROGEN PEROXIDE DISINFECTING WIPES

TOALLITAS DESINFECTANTES
CON PERÓXIDO DE HIDRÓGENO

ELIMINATES 99.9% OF BACTERIA AND VIRUSES*

**FORMULATED WITH PATENTED
HYDROGEN
PEROXIDE
TECHNOLOGY**



- NO HARSH CHEMICAL FUMES
- NO VOCs
- NO FRAGRANCE ADDED
- BLEACH FREE

ACTIVE INGREDIENT:	INGREDIENTE ACTIVO:
Hydrogen Peroxide.....1.4%	Peróxido de Hidrógeno.....1.4%
OTHER INGREDIENTS:.....98.6%	OTROS INGREDIENTES:.....98.6%
TOTAL:.....100.0%	TOTAL:.....100.0%

110 PREMOISTENED WIPES
6.75" X 7.75" (17.1 cm x 19.6 cm)
NET WT 26 OZ (1 LB 10 OZ) 736 g

KEEP OUT OF REACH OF CHILDREN
CAUTION - SEE BACK PANEL FOR ADDITIONAL
PRECAUTIONARY STATEMENTS.
MANTÉNGASE FUERA DEL ALCANCE DE LOS NIÑOS
PRECAUCIÓN - VEA EL PANEL POSTERIOR PARA
DECLARACIONES PREVENTIVAS ADICIONALES.
Si usted no entiende la etiqueta, busque a alguien para
que se la explique a usted en detalle.

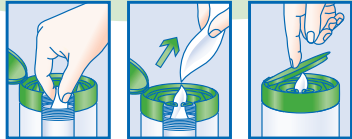
R0912030

Clorox Commercial Solutions®



HYDROGEN PEROXIDE DISINFECTING WIPES

TOALLITAS DESINFECTANTES
CON PERÓXIDO DE HIDRÓGENO



TO OPEN PACKAGE:

Open lid and pull out wipe from center of roll. The next sheet pops up automatically. When finished, close lid to retain moisture.

DIRECTIONS FOR USE: It is a violation of Federal law to use this product in a manner inconsistent with its labeling. **Not for cleaning or sanitizing skin. Do not use as a diaper wipe or for personal cleansing. For surfaces that may come in contact with food, a potable water rinse is required. Do not use on glassware, utensils or dishes.**

GENERAL CLEANING: Directly apply this product to completely wet surface and wipe clean. No rinsing needed. Repeat for heavily soiled areas. For stubborn stains, heavily soiled areas or tougher jobs, allow product to penetrate before wiping.

TO CLEAN, DISINFECT AND DEODORIZE HARD, NONPOROUS SURFACES: Wipe surface until completely wet. Allow this product to remain wet for contact time listed on label. Let air dry. For heavily soiled areas, a precleaning is required.

MODO DE EMPLEO: El uso de este producto de una manera diferente a la especificada en la etiqueta constituye una violación a la ley federal. **No es para limpiar ni sanear la piel. No use como toallita para limpiar a un bebé ni para limpieza personal. Para superficies que puedan entrar en contacto con los alimentos se requiere un enjuague con agua potable. No lo use en cristalería, utensilios ni platos.**

LIMPIEZA GENERAL: Aplique directamente este producto para mojar completamente la superficie y limpie. No necesita enjuague. Repita en áreas muy sucias. Para las manchas difíciles de quitar o áreas muy sucias, o para las limpiezas más difíciles, deje que el producto penetre antes de limpiarlo.

PARA LIMPIAR, DESINFECTAR Y DESODORIZAR SUPERFICIES DURAS Y SIN POROS: Limpie la superficie hasta que esté completamente mojada. Deje que permanezca mojada con este producto por el tiempo de contacto que se lista en la etiqueta. Deje secar al aire. Para áreas muy sucias, se requiere una limpieza previa.

ORGANISMS: BACTERIA: 30 second contact time: Carbapenem Resistant *Klebsiella pneumoniae*, *Enterobacter aerogenes*, *Escherichia coli* (*E. coli*), *Escherichia coli* New Delhi Metallo-Beta Lactamase-1 (NDM-1), *Escherichia coli* O157:H7, *Klebsiella oxytoca*, *Klebsiella pneumoniae* New Delhi Metallo-Beta Lactamase-1 (NDM-1), Multidrug Resistant *Enterococcus faecium*, Multidrug Resistant *Klebsiella pneumoniae*, Penicillin-Resistant *Streptococcus pneumoniae*, *Pseudomonas aeruginosa*, *Salmonella enterica*, *Streptococcus pyogenes*, Vancomycin Resistant *Enterococcus faecalis* (VRE)

BACTERIA: 1 minute contact time: *Acinetobacter baumannii*, *Campylobacter jejuni*, Community Acquired Methicillin Resistant *Staphylococcus aureus* (CA-MRSA), Linezolid Resistant *Staphylococcus aureus*, Methicillin Resistant *Staphylococcus aureus* (MRSA) (ATCC 33591), Methicillin Resistant *Staphylococcus aureus* (MRSA) (ATCC 33592), *Staphylococcus aureus*

***VIRUSES: 30 second contact time:** Cytomegalovirus, Herpes simplex virus type 1, Herpes simplex virus type 2, Human Coronavirus, Influenza A virus (H3N2), Influenza A virus (2009 H1N1), Influenza B virus, Respiratory syncytial virus (RSV)

***VIRUSES: 1 minute contact time:** Avian Influenza A virus (H5N1), Rhinovirus (type 37), Rotavirus (Strain WA)

***VIRUSES: 3 minute contact time:** Norovirus

MOLD, FUNGI: 5 minute contact time: *Candida albicans*, *Trichophyton mentagrophytes*

EPA Reg. No. 67619-25. EPA Est. No. 5813-GA-1 (A4), GA-2 (VG); 8251-OH-1 (Q6), WI-3 (KV), WI-5 (26).
Beginning of batch code indicates Est. No.
Visit us at www.cloroxprofessional.com.
U.S. Patent No. 7,658,953

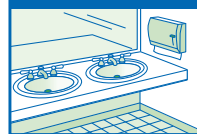


- Eliminates 99.9% of Bacteria and Viruses*
- Cuts Grease and Grime
- No Harsh Chemical Fumes
- Deodorizes
- Cleans and Disinfects in One Step

SCHOOLS & OFFICES



BATHROOMS



KITCHENS



Use Sites: Day care centers, schools, colleges, universities, commercial kitchens, germ prone surfaces, health clubs, locker rooms, lodging establishments, manufacturing facilities, military installations, office buildings, play areas, public areas, public restrooms, restaurants, recreational facilities, retail businesses, sports arenas, transportation terminals

Surfaces: appliance exteriors, bathroom fixtures, countertops, desktops, diaper pails, exercise equipment, faucets, garbage cans, washable kitchen surfaces, lockers, play structures, range hoods, sinks, shower areas, tables, toilet areas, telephones

Surface Materials: baked enamel, chrome, glass, glazed ceramic, glazed porcelain, glazed tile, laminated surfaces, plastic, stainless steel, vinyl

NOT RECOMMENDED FOR USE ON: aluminum, painted wood, unfinished wood, sealed marble, granite.

PRECAUTIONARY STATEMENTS: HAZARDS TO HUMANS AND DOMESTIC ANIMALS.

CAUTION: Causes moderate eye irritation. Avoid contact with eyes or clothing. Wash thoroughly with soap and water after handling and before eating, drinking, chewing gum, using tobacco or using the toilet. **FIRST AID: If in eyes:** Hold eye open, and rinse slowly and gently with water for 15–20 minutes. Remove contact lenses, if present, after the first 5 minutes, then continue rinsing. Call the poison control center at (800) 222-1222 or a doctor for treatment advice. Have the product container or label with you when calling a poison control center or doctor or going for treatment.

DECLARACIONES PREVENTIVAS: RIESGOS PARA LOS SERES HUMANOS Y ANIMALES DOMÉSTICOS.

PRECAUCIÓN: Causa irritación moderada a los ojos. Evite el contacto con los ojos o la ropa. Lávese bien con agua y jabón después de usar y antes de comer, beber, mascar goma, usar tabaco o usar el inodoro. **PRIMEROS AUXILIOS: Contacto con los ojos:** Mantenga los ojos abiertos y enjuague con agua lentamente, con cuidado, durante 15–20 minutos. Si hay lentes de contacto, retírelos después de los primeros 5 minutos, luego continúe enjuagando. Llame al centro de control de envenenamiento al (800) 222-1222 ó al médico para obtener asesoría sobre el tratamiento. Cuando llame al centro de control de envenenamiento o a un médico, o intente obtener tratamiento, tenga a la mano el envase o la etiqueta del producto.

STORAGE AND DISPOSAL: Store this product in a cool, dry area away from direct sunlight and heat to avoid deterioration. Dispose of wipe in trash after use. Do not flush. Nonrefillable container. Do not reuse or refill empty container. Recycle empty container or discard in trash.

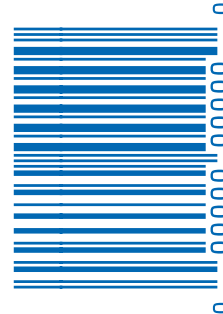
QUESTIONS OR COMMENTS? Call (888) 797-7225.

For MSDS information, please go to www.cloroxprofessional.com.

Mfd. for Clorox Professional Products Company, 1221 Broadway, Oakland, CA 94612.

Commercial Solutions is a registered trademark of Clorox Professional Products Company.


Clorox is a registered trademark of The Clorox Company. Made in the U.S.A. © 2014



R0912030

Artwork shown at approximately 110%. PDF prints at approximately 100% from acrobat reader or when "Fit to printable area" settings are selected.

Artwork shown at approximately 110%. PDF prints at approximately 100% from acrobat reader or when "Fit to printable area" settings are selected.



CLOROX

HYDROGEN PEROXIDE DISINFECTING WIPES

TOALLITAS DESINFECTANTES CON PERÓXIDO DE HIDRÓGENO

ELIMINATES 99.9% OF BACTERIA AND VIRUSES*

FORMULATED WITH PATENTED HYDROGEN PEROXIDE TECHNOLOGY

- NO HARSH CHEMICAL FUMES
- NO VOCs
- NO FRAGRANCE ADDED
- BLEACH FREE

800 WET WIPES
6.75" X 5.75"
(17.14 cm x 14.60 cm)
NET WT 8 LB 6.5 OZ (3.81 kg)

ACTIVE INGREDIENT:
Hydrogen Peroxide..... 1.4%
OTHER INGREDIENTS:..... 98.6%
TOTAL:..... 100.0%

INGREDIENTE ACTIVO:
Peróxido de Hidrógeno..... 1.4%
OTROS INGREDIENTES:..... 98.6%
TOTAL:..... 100.0%

KEEP OUT OF REACH OF CHILDREN
CAUTION - SEE BACK PANEL FOR ADDITIONAL PRECAUTIONARY STATEMENTS.
MANTÉNGASE FUERA DEL ALCANCE DE LOS NIÑOS
PRECAUCIÓN - VEA EL PANEL POSTERIOR PARA DECLARACIONES PREVENTIVAS ADICIONALES.
Si usted no entiende la etiqueta, busque a alguien para que se la explique a usted en detalle.

• Eliminates 99.9% of bacteria and viruses* • Cleans and Disinfects in One Step • Deodorizes • Removes Grime

DIRECTIONS FOR USE: It is a violation of Federal law to use this product in a manner inconsistent with its labeling. **Not for cleaning or sanitizing skin. Do not use as a diaper wipe or for personal cleansing. For surfaces that may come in contact with food, a potable water rinse is required. Do not use on glassware, utensils or dishes.**

Refill Pouch: Insert refill pouch into bucket. Cut open refill pouch. DO NOT remove wipe roll from refill pouch. Insert corner of center sheet through flap opening on lid. DO NOT push finger through opening. Replace lid and pull wipe at an angle. The next wipe pops up automatically. When finished, close flap to retain moisture. Discard wipe after use. To prevent cross contamination do not reuse wipe. If bucket becomes contaminated replace immediately. Replace bucket immediately if tabs below flap become damaged.

Use Sites: Day care centers, schools, colleges, universities, commercial kitchens, gyms, health clubs, locker rooms, lodging establishments, military installations, office buildings, play areas, public restrooms, restaurants, recreational facilities, retail businesses, sports arenas, transportation terminals

ORGANISMS: BACTERIA: 30 second contact time:
Carbapenem Resistant *Klebsiella pneumoniae*, *Enterobacter aerogenes*, *Escherichia coli* (*E. coli*), *Escherichia coli* New Delhi Metallo-Beta Lactamase-1 (NDM-1), *Escherichia coli* O157:H7, *Klebsiella oxytoca*, *Klebsiella pneumoniae* New Delhi Metallo-Beta Lactamase-1 (NDM-1), Multidrug Resistant *Enterococcus faecium*, Multidrug Resistant *Klebsiella pneumoniae*, Penicillin-Resistant *Streptococcus pneumoniae*, *Pseudomonas aeruginosa*, *Salmonella enterica*, *Streptococcus pyogenes*, Vancomycin Resistant *Enterococcus faecalis* (VRE)
BACTERIA: 1 minute contact time:
Acinetobacter baumannii, *Campylobacter jejuni*, Community Acquired Methicillin Resistant *Staphylococcus aureus* (CA-MRSA), Linezolid Resistant *Staphylococcus aureus*, Methicillin Resistant *Staphylococcus aureus* (MRSA) (ATCC 33591), Methicillin Resistant *Staphylococcus aureus* (MRSA) (ATCC 33592), *Staphylococcus aureus*

***VIRUSES: 30 second contact time:** Cytomegalovirus, Herpes simplex virus type 1, Herpes simplex virus type 2, Human Coronavirus, Influenza A virus (H3N2), Influenza A virus (2009 H1N1), Influenza B virus, Respiratory syncytial virus (RSV)
***VIRUSES: 1 minute contact time:** Avian Influenza A virus (H5N1), Rhinovirus (type 37), Rotavirus (Strain WA)
***VIRUSES: 3 minute contact time:** Norovirus
MOLD, FUNGI: 5 minute contact time: *Candida albicans*, *Trichophyton mentagrophytes*

TO CLEAN, DISINFECT AND DEODORIZE HARD, NONPOROUS SURFACES: Wipe surface until completely wet. Allow this product to remain wet for contact time listed on label. Let air dry. For heavily soiled areas, a precleaning is required.
MODO DE EMPLEO: El uso de este producto de una manera diferente a la especificada en la etiqueta constituye una violación a la ley federal. **No es para limpiar ni sanear la piel. No use como toallita para limpiar a un bebé ni para limpieza personal. Para superficies que puedan entrar en contacto con los alimentos se requiere un enjuague con agua potable. No lo use en cristalería, utensilios ni platos.**
PARA LIMPIAR, DESINFECTAR Y DESODORIZAR SUPERFICIES DURAS Y SIN POROS: Limpie la superficie hasta que esté completamente mojada. Deje que permanezca mojada con este producto por el tiempo de contacto que se lista en la etiqueta. Deje secar al aire. Para áreas muy sucias, se requiere una limpieza previa.

Surface Materials: baked enamel, chrome, glass, glazed ceramic, glazed porcelain, glazed tile, laminated surfaces, plastic, stainless steel, vinyl
NOT RECOMMENDED FOR USE ON: aluminum, galvanized steel, painted wood, unfinished wood, sealed marble, sealed granite.

PRECAUTIONARY STATEMENTS: HAZARDS TO HUMANS AND DOMESTIC ANIMALS.
CAUTION: Causes moderate eye irritation. Avoid contact with eyes or clothing. Wash thoroughly with soap and water after handling and before eating, drinking, chewing gum, using tobacco or using the toilet. **FIRST AID: If in eyes:** Hold eye open and rinse slowly and gently with water for 15-20 minutes. Remove contact lenses, if present, after the first 5 minutes, then continue rinsing. Call the poison control center at (800) 222-1222 or doctor for treatment advice. Have the product container or label with you when calling a poison control center or doctor or going for treatment.
DECLARACIONES PREVENTIVAS: RIESGOS PARA LOS SERES HUMANOS Y ANIMALES DOMÉSTICOS.
PRECAUCIÓN: Causa irritación moderada a los ojos. Evite el contacto con los ojos o la ropa. Lávese bien con agua y jabón después de usar y antes de comer, beber, mascar goma, usar tabaco o usar el inodoro. **PRIMEROS AUXILIOS: Contacto con los ojos:** Mantenga los ojos abiertos y enjuague con agua lentamente, con cuidado, durante 15-20 minutos. Si hay lentes de contacto, retírelos después de los primeros 5 minutos, luego continúe enjuagando. Llame al centro de control de envenenamiento al (800) 222-1222 ó al médico para obtener asesoría sobre el tratamiento. Cuando llame al centro de control de envenenamiento o a un médico, o intente obtener tratamiento, tenga a la mano el envase o la etiqueta del producto.

STORAGE AND DISPOSAL: Store this product in a cool, dry area away from direct sunlight and heat to avoid deterioration. Dispose of wipe in trash after use. Do not flush. Nonrefillable container. Do not reuse or refill empty container. Recycle empty container or discard in trash.
QUESTIONS OR COMMENTS? Call (888) 797-7225.
For MSDS information, please go to www.cloroxprofessional.com.
Mfd. for & © 2014 Clorox Professional Products Company, 1221 Broadway, Oakland, CA 94612.
Commercial Solutions is a registered trademark of Clorox Professional Products Company. Clorox is a registered trademark of The Clorox Company.
Made in the U.S.A.
EPA Reg. No. 67619-25 EPA Est. No. 5813-GA-1 (A4), GA-2 (VG); 8251-OH-1 (O6); WI-3 (KV), WI-5 (26) Beginning of batch code indicates Est. No.
Visit us at www.cloroxprofessional.com.
U.S. Patent No. 7,658,953

R0913030
NI-22100



ACCEPTED
VIA NOTIFICATION
LABEL NOT REVIEWED

April 8, 2014

New York State Department
of Environmental Conservation
Division of Materials Management
Pesticide Product Registration